



Pre-proposal Webinar

Request for Application (RFA) #01-18

February 26, 2018

Introductions

- **Andrew Dietz**
OCDEL
Family Support Program Manager
and RFA Project Officer
- **Karen Shanoski and Rijelle Kraft**
Center for Schools and Communities
CTF Technical Assistance

Purpose

To provide information regarding:

- Children's Trust Fund program
- RFA program requirements and funding priorities
- Cost guidelines
- Eligibility requirements and disqualification
- Submission and scoring
- Additional questions

Mission

To prevent child abuse and neglect in Pennsylvania

through grants to community-based service providers

Structure

- Member of a national network
- Created by statute in PA – Act 151 of 1988
- Administered by a 15-member Board of Directors and Department of Human Services
- Deputy Secretary for DPW's Office of Child Development and Early Learning serves as Executive Director
- Duties and responsibilities – OCDEL staff

Funding Sources

- Constant Revenue - \$10 surcharge on marriage and divorce applications, investment income and donations
- Deposited into a special state account

RFA Focus Statement

Supporting parents to ensure they have the resources and information they need to provide enriching and nurturing environments for their children is an effective strategy to prevent child abuse and neglect. Selected grantees will use evidence-based or promising practice programs that focus on the parent/caregiver, the parent/caregiver and their child, or the whole family. The program may not focus solely on the child.

Specific Program Requirements

Applicants will:

1. Describe the evidence-based model or promising practice to be implemented. Applicants may use the resources provided in the RFA or select a promising practice with which they are familiar, that supports families in building protective factors and strengthening families' effective functioning to prevent child abuse and neglect.

Specific Program Requirements, contd.

Applicants will:

2. Demonstrate how the chosen evidence-based or promising practices are aligned with the Strengthening Families™ Protective Factors Framework.
3. Collaborate and coordinate with overarching *county or community collaborative or advisory groups and services that focus on children and families and child abuse and neglect prevention issues* to identify needs, avoid duplication of services and assure sustainability of the services.

Cost Guidelines

- Maximum award = \$150,000 for up to three years
- Up to \$50,000 per year
- Local match requirement
 - 25% first year
 - 50% second and third years
- Half of total match must be cash; balance may be cash or in-kind
- Minimum \$500 for professional development each year

Eligibility

- Any organization located and operating in PA may apply
- Subcontracting agencies
- Primary and secondary prevention programs
- Develop new or enhance existing programs
- Must meet all RFA program requirements

Ineligibility and Disqualification

- Late applications will be disqualified
- Conflict of interest with CTF Board
- CTF Board reserves the right to disqualify
- Provide intervention-based or treatment (tertiary) services
- Federal or state funding used for match

Submission

- Use RFA checklist – Attachment 3
- Due date: April 13 at or before 2:00 p.m.
- Include electronic version
- Mail using sample labels provided in Attachment 3

Scoring Process and Timeline

- April/May:
 - Evaluation Committee established
 - Competitively score individual applications
- May: CTF Board chooses grant recipients
- June: Announcement made
- Grant year begins July 1, 2018

Additional Questions

- Submit additional questions electronically to the RFA Project Officer
- No questions accepted either verbally or in writing after 2:00 p.m. on February 26, 2018.
- No answer is final until confirmed in writing
- Written Q&A document will be available for all applicants on DGS website in approximately one week

CENTER FOR THE STUDY
OF SOCIAL POLICY'S

strengthening families™

A PROTECTIVE FACTORS FRAMEWORK



PENNSYLVANIA
strengthening**families**

RFA 01-18, page 19

The Strengthening Families™ Protective Factors (SFPF) Framework, developed by the Center for the Study of Social Policy is an approach that is parent-centered and strengths-based. Although many applicants already work from a strengths-based perspective, this funding opportunity requires that this approach be integrated into the work.

Five Protective Factors

1. Parental resilience
2. Social connections
3. Knowledge of parenting and child development
4. Concrete support in times of need
5. Social and emotional competence of children

The Four Big Ideas Behind Strengthening Families™

- Building protective and promotive factors, not just reducing risk
- An approach – not a model, a program or a curriculum
- A changed relationship with parents
- Aligning practice with developmental science

Parental resilience

Managing stress and functioning well when faced with challenges, adversity and trauma

Social connections

Positive relationships that provide emotional, informational, instrumental and spiritual support

Knowledge of parenting & child development

Understanding child development and parenting strategies that support physical, cognitive, language, social and emotional development

Concrete support in times of need

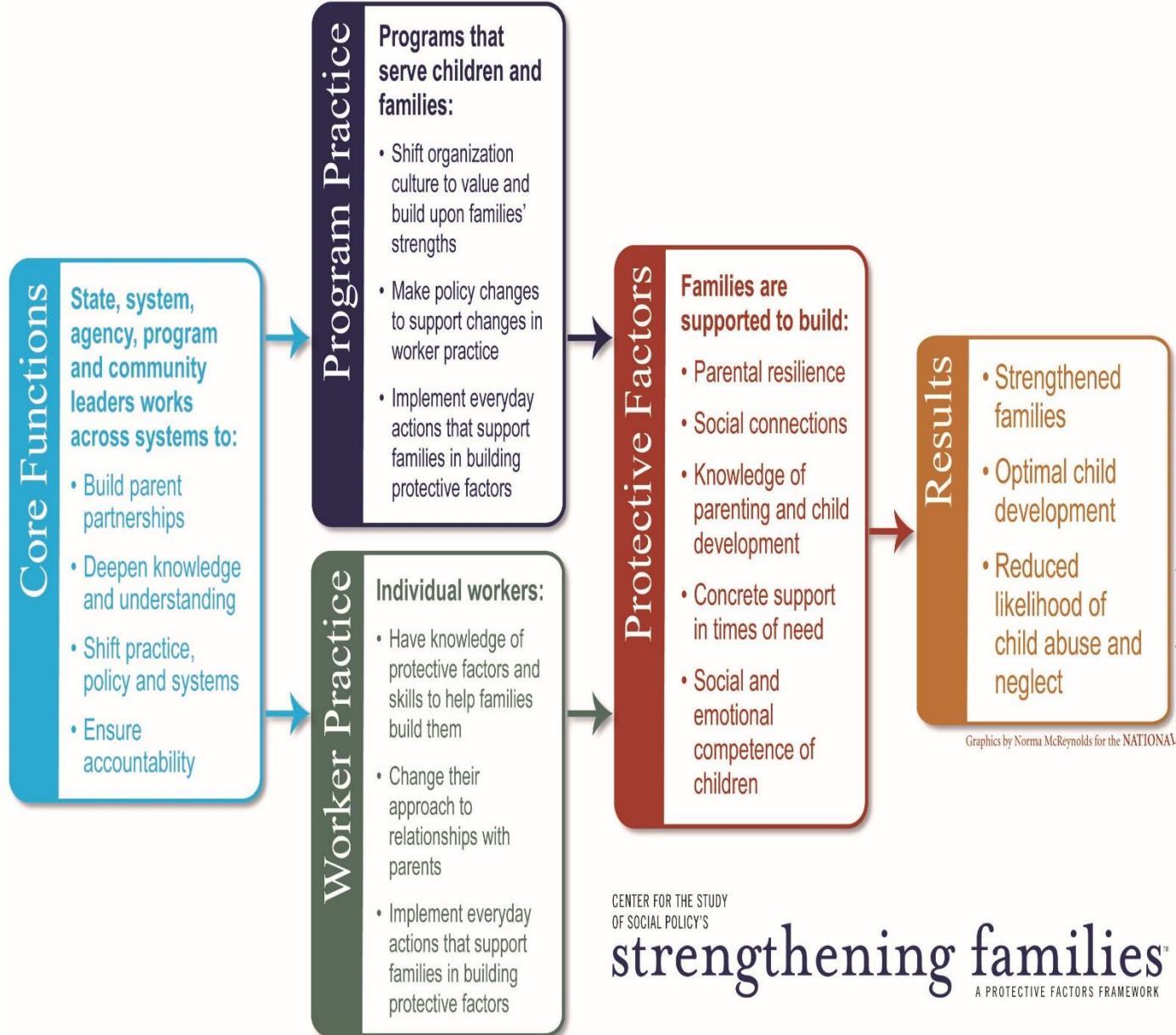
Access to concrete support and services that address a family's needs and help minimize stress caused by challenges

Social & emotional competence of children

Family and child interactions that help children develop the ability to communicate clearly, recognize and regulate their emotions and establish and maintain relationships

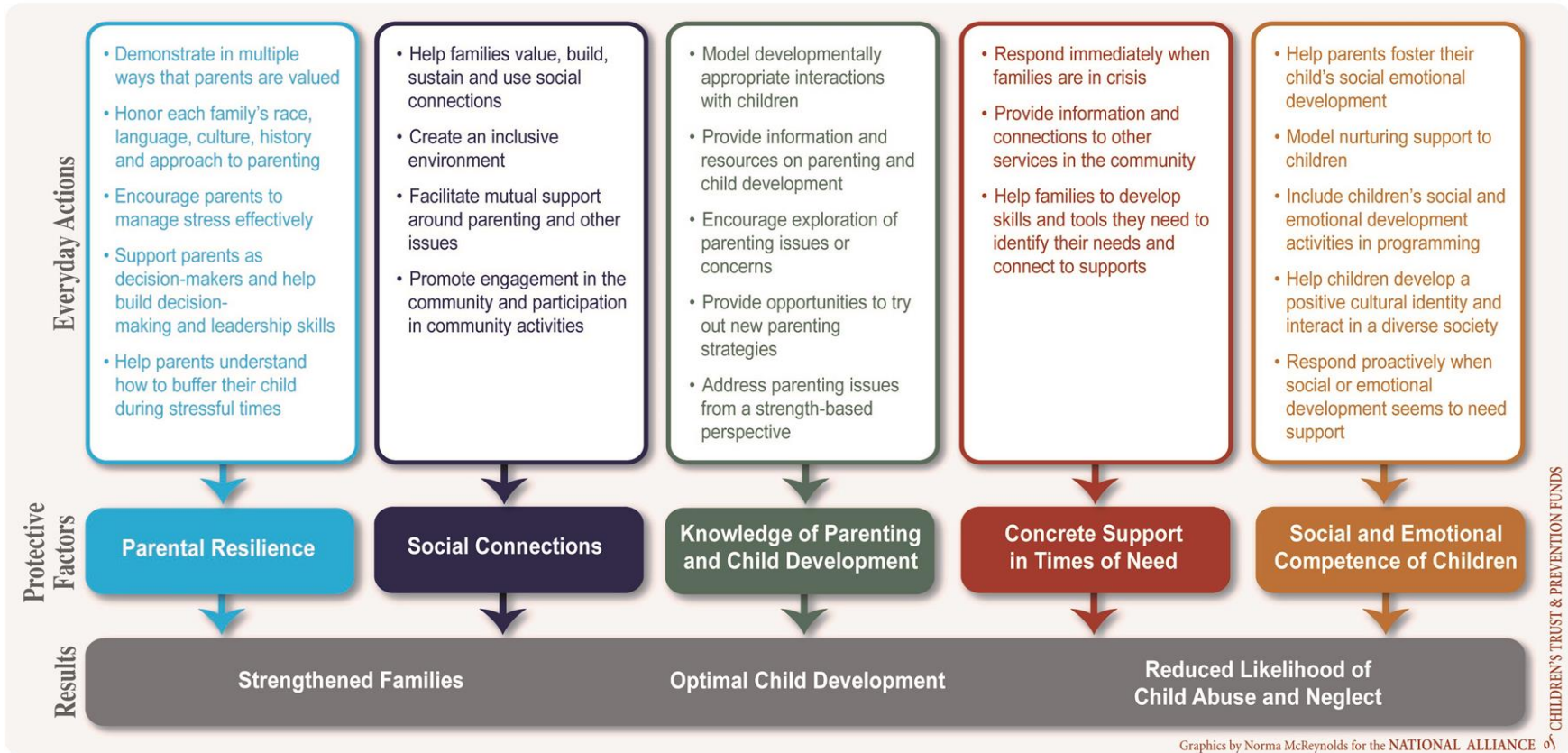
The Pathway to Improved Outcomes for Children and Families

Strengthening Families™ Protective Factors Framework Logic Model



The Pathway to Improved Outcomes for Children and Families

Everyday Actions That Help Build Protective Factors



Pennsylvania

Strengthening Families Leadership Team

- Policy---systems
- Practice---among professionals
- Messaging---asset orientation
- Parents---as partners

Activities

- Professional development
- Information sharing
- Promotion of the framework

Resources

- Center for the Study of Social Policy
 - www.cssp.org
- National Alliance of Children's Trust Funds
 - www.ctfalliance.org
- PA Strengthening Families
 - www.pa-strengthening-families.org
- Center for Schools and Communities
 - www.center-school.org

CTF Pre-Proposal Webinar

TA Tips

February 26, 2018

Numbers Served

- Please be clear and realistic about the number of families you plan to serve over the course of your grant
- Describe the numbers listed in the chart in the narrative. Be sure that the numbers you are listing are unduplicated.
- Discrete Offerings vs. Multi-Year Programs – Examples

Numbers Served

- Parent Education Workshops – Discrete Offering
- Example: 3 Workshops Series per Year, 15 Families per Class

NOTE: Programs may vary in delivery, number of participants, number of offerings, etc.

Year	Families	Parents/Caregivers	Children
Year One	45	60	45
Year Two	45	60	45
Year Three	45	60	45
Total	135	180	135

Numbers Served

- Multi-Year Programs
- Example: Families receive services for 2-3 years.

NOTE: Programs may vary in delivery, number of participants, number of offerings, etc.

Year	Families	Parents/Caregivers	Children
Year One	45	60	45
Year Two	45	60	45
Year Three	45	60	45
Total	45+	60+	45+

Describing the Proposed Program Model

- Evidence-based or promising practice
- Include evidence that describes how this program supports families in building protective factors and reduces the likelihood of child abuse and neglect
- Remember to cite sources

Describing the Proposed Program Model

- Types of evidence could include:
 - Peer-reviewed research
 - Quantitative or qualitative data compiled by the developers of evidence-based or promising practice programs that demonstrate program effectiveness
 - Research or review of the program by outside sources
 - Endorsement of the program by a professional association
 - Locally gathered quantitative or qualitative data that demonstrates program effectiveness.

Fidelity to the Proposed Program Model

- What mechanisms are in place to ensure that the chosen program is being implemented with fidelity to that model?
- Are there built in fidelity checks from the program developers?

Strengthening Families Protective Factors Framework

- How will the program you choose for this RFA incorporate the SFPF Framework?
- How will you provide professional development on the SFPF Framework to ensure that staff understand and incorporate this approach in their work?

Program Evaluation

- Outcomes and Indicators Chart

Broad Outcome Area	Participant Outcomes	Indicators	Performance Targets	Assessment Method(s)
Parental Resilience	Participating caregivers know pro-social and non-violent methods of stress and anger management.	Participating caregivers know how to share their feelings and concerns in productive ways.		



Questions?

Thank You and Good Luck!

